



SSC GD - 2023
FULL TEST – 01

TOTAL MARKS : 160

TIME : 60 Minutes

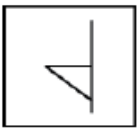
SUBJECT	NO. OF QUESTIONS
REASONING ABILITY	20
GENERAL KNOWLEDGE	20
MATHEMATICS	20
ENGLISH	20

SECTION – A (REASONING)

Instructions

For the following questions answer them individually

1. Choose the option in which the figure marked 'X' is embedded.



2. Select the option that is related to the third term in the same way as the second term is related to the first term. CGK: XTP: GIM:?

A) TSN

B) TPN

C) TQN

D) TRN

3. J, K, L, M, N and O are six teachers. Each one teaches a different subject out of Hindi, English, Math, Science, Social Science and Arts, not necessarily in the same order. Each of them teaches on only one day, from Monday to Saturday, not necessarily in the same order. J teaches Arts on Saturday. L teaches neither English nor Social Science, but he teaches on Thursday. Wednesday is reserved for Maths taught by K. O teaches Science a day before N. Social Science is taught a day before Arts. Which subject is taught by L

A) Hindi

B) Maths

C) Science

D) Arts

4. In a certain code, TOUCH is written as 68. How will ERROR be written in that code?

A) 61

B) 54

C) 59

D) 55

5. Which number will follow next in the given number series?

3, 18, 48, 93, ?

A) 247

B) 147

C) 153

D) 202

6. Which one of the following letter clusters does NOT belong to the group?

A) EG

B) AK

C) CI

D) FH



7. The statements below are followed by two conclusions labeled I and II. Assuming that the information in the statements is true, even if it appears to be at variance with generally established facts, decide which conclusion(s) logically and definitely follow(s) from the Information given in the statements.

Statements:

1) Some monks are convicts.

2) Some convicts are soldiers.

Conclusion:

I. Some convicts are monks.

II. Some soldiers are convicts.

A) Only conclusion II follows.

B) Neither conclusion I nor conclusion II follows.

C) Only conclusion I follows.

D) Both conclusions follow.

8. Select the option that is related to the third number in the same way as the second number is related to the first number.

15 : 225 :: 13 : ?

A) 208

B) 169

C) 144

D) 275

9. Select the Venn diagram that best represents the given set of classes.

Austria, Denmark, Countries



10. Choose the odd number out of the given options.

A) 78

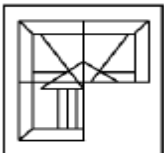
B) 91

C) 24

D) 65

11. Select a figure from amongst the four alternatives that when placed in the blank space (?) of figure X will complete the pattern.

(Rotation is not allowed).



12. Which number will follow next in the given number series?

7, 8, 16, 43, ?

A) 109

B) 107

C) 113

D) 111

13. Eight friends A, B, C, D, E, F, G and H are sitting around circular table facing each other for a lunch. A is opposite F and third to the right of B. G is between F and D. H is to the left of D. E is between C and A. Who is sitting second to the left of C?

A) D

B) F

C) B

D) A



14. Choose the option that most closely resembles the mirror image of the given word if mirror is placed at the right side.

RUPTURE

A ERUTPJR

B ERUTPJR

C ERUTPJR

D ERUTPJR

15. In a certain code, ASSUME is written as EMUASS. How will NEEDLE be written in that code?

A) ELDEEN B) EJDNEE C) EDLNEE D) ELDNEE

16. The statements below are followed by two conclusions labeled I and II. Assuming that the information in the statements is true, even if it appears to be at variance with generally established facts, decide which conclusion(s) logically and definitely follow(s) from the information given in the statements.

Statements:

1) All butterflies are reptiles.

2) All reptiles are mammals.

Conclusion:

I. All mammals are butterflies.

II. All butterflies are mammals.

A) Both conclusions follow.

B) Either conclusion I or conclusion II follows.

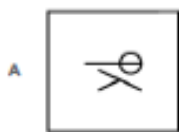
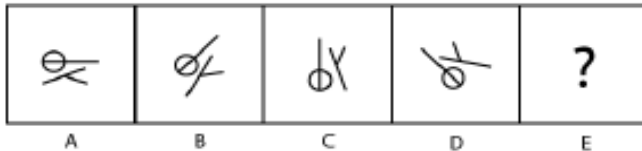
C) Only conclusion II follows.

D) Only conclusion I follows.

17. Choose the odd one out of the given options.

A) Fox B) Tiger C) Crocodile D) Lion

18. Choose the option that would follow next in the given figure series.



19. Select the correct option that will fill in the blank and complete the series.

MHW, KJU, ILS, GNQ,.....?

A) EPQ B) EPO C) FPO D) EOP

20. Select the option that is related to the third term in the same way as the second term is related to the first term.

Iran: Rial = Iraq : ?

A) War B) Dirham C) Dinar D) Rial



SECTION – B (GENERAL KNOWLEDGE)

21. Who has won the Nobel Prize in Literature 2022?

- A) Rudyard Kipling B) Bob Dylan C) Abdul Gurna D) Anne Enox

22. Which state has become the first state in India to create the role of “Director General of Audit”?

- A) Tamil Nadu B) Haryana C) Rajasthan D) Chhattisgarh

23. Where is the 24th Winter Olympic Games 2022 held?

- A) Tokyo B) Moscow C) Beijing D) Shanghai

24. Who has written the novel “A Place Called Home”?

- A) Preeti Shenoy B) Geetanjali Shree C) Meena Nayyar D) Richa Mishra

25. Which is the first railway station in India to be equipped with augmented reality screen?

- A) Chhatrapati Shivaji Maharaj Terminus B) Howrah Railway Station
C) Sealdah Railway Station D) Secunderabad Railway Station

26. Who will become the world’s first “disabled astronaut”?

- A) Rafael Ligio B) John McFaul C) Rosemary Coogan D) Marco Seber

27. Which state has won the “Nutri Grain Award 2022” for promoting millet cultivation?

- A) Uttar Pradesh B) Odisha C) Chhattisgarh D) Manipur

28. Who is the author of the book “The Queen of Indian Pop: The Authorized Biography of Usha Uthup”?

- A) Anirudh Suri B) Vikas Kumar Jha C) Uma Das Gupta D) J Sai Deepak

29. Which is the first Union Territory in the country to be integrated with the “National Single Window System”?

- A) New Delhi B) Chandigarh
C) Lakshadweep D) Jammu and Kashmir

30. Who has become the new Vice President of NITI Aayog?

- A) Sanjeev Bansal B) Rohit Agarwal C) Mohit Chauhan D) Suman K Beri

31. Who built the Grant Trunk Road?

- A) Aurangzeb B) Akbar C) Shah Jahan D) Sher Shah Suri

32. Who was the first president of the Indian National Congress?

- A) Dadabhai Naoroji B) Badruddin Tyabji
C) Alan Octavin Hume D) Womesh Chandra Banerjee



33. Which river is called the "Sorrow Of Bengal"?

- A) Damodar B) Hooghly C) Kosi D) Brahmaputra

34. Who was the founder of "Anushilan Samiti"?

- A) Sathish Chandra Basu B) Pulin Das
C) Prafulla Chaki D) Kanai Lal Dutta

35. The Vikramashila University was founded by?

- A) Ashoka B) Dharmapala C) Chandragupta-I D) Bimbisara

36. Which among the following acid is also known as "Muriatic Acid"?

- A) Sulfurous Acid B) Oxalic Acid
C) Formic Acid D) Hydrochloric acid

37. Due to deficiency of which of the following vitamins, blood comes from the gums and teeth?

- A) Vitamin A B) Vitamin B C) Vitamin C D) Vitamin D

38. Which of the following is not a vector quantity?

- A) Speed B) Velocity C) Torque D) Displacement

39. Which of the following is a unicellular organism?

- A) Red Algae B) Muscle cells C) Fungus D) Bacteria

40. Which is the most ductile metal from the following?

- A) Iron B) Aluminium C) Copper D) Gold

SECTION – C (MATHEMATICS)

41. What will be the Highest Common Factor of $2^3 \times 3^5 \times 5^5$ and $3^1 \times 5^2 \times 7^1$

- A) $2^1 \times 3^1 \times 5^2$ B) $2^1 \times 3^1 \times 5^2 \times 7^1$ C) $2^3 \times 3^5 \times 5^7 \times 7^1$ D) $3^1 \times 5^2$

42. What will be the difference between the compound interest (interest is compounded annually) and simple interest on a sum of Rs. 3200 at the rate of 20% per annum for 2 years?

- A) Rs. 128 B) Rs. 148 C) Rs. 132 D) Rs. 96

43. Selling price and cost price of a book are in the ratio of 3 : 4. What will be the profit/loss percentage?

- A) 25% loss B) 33.33% profit C) 66.66% loss D) 20% profit

44. What will be the average of first four positive multiples of 8?

- A) 16 B) 20 C) 32 D) 24



45. The data given below shows the number of people who have saved a certain amount of money.

Savings (in Rs.)	Number Of people
5	1
15	3
20	4
25	2
30	1
35	1
40	1

What is the mode of the given data?

- A) Rs.20 B) Rs.30 C) Rs.25 D) Rs.15

46. The length and breadth of a rectangle is 16 cm and 12 cm. What will be the area of the rectangle?

- A) 144 cm^2 B) 192 cm^2 C) 212 cm^2 D) 176 cm^2

47. In an election between Ravi and Manoj, Ravi gets 61% of the total valid votes. If total votes were 25000 and 20% of the total votes were declared invalid, then other candidate Manoj get how much number of votes?

- A) 8200 B) 7800 C) 9750 D) 8025

48. What is the value of $512 \div 16 + 4 \times \frac{5}{2} \text{ of } \left(\frac{1}{8} + \frac{1}{3} \right)$?

- A) $\left(\frac{455}{12} \right)$ B) $\left(\frac{449}{12} \right)$ C) $\left(\frac{439}{12} \right)$ D) $\left(\frac{443}{12} \right)$

49. The Least Common Multiple and Highest common Factor of two numbers are 30 and 5 respectively. If their sum is 25, then what will be the difference of these two numbers?

- A) 15 B) 10 C) 25 D) 5

50. A bag has Rs.840 in the denomination of Rs.1, Rs. 2 and Rs. 5 coins. Rs. 1, Rs. 2 and Rs. 5 coins are in the ratio of 8: 1: 5. How many coins of Rs. 5 are in the bag?

- A) 60 B) 24 C) 600 D) 120

51. A sum of Rs.10500 becomes Rs.17745 in 2 years at the rate of compound interest. If the interest is compounded annually, then what will be the rate of interest?

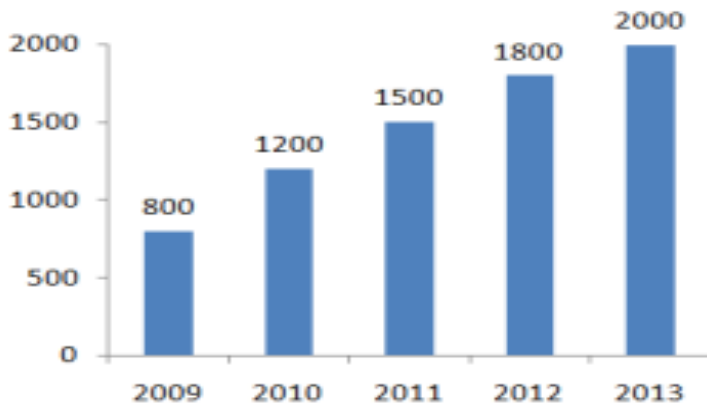
- A) 40% B) 30% C) 25% D) 20%

52. What is the value of $\left(2000 \div \frac{1}{2} \text{ of } \frac{25}{2} \times \frac{5}{2} \text{ of } \frac{4}{25} - 5 \right)$?

- A) 121 B) 123 C) 122 D) 126



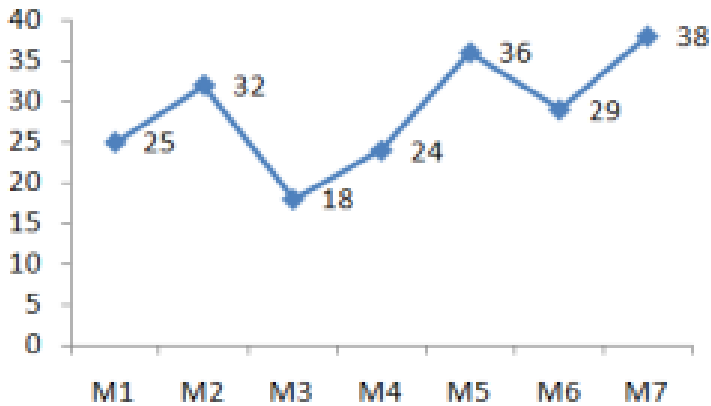
53. Neeraj covers two distances of 10 km and 20 km in 1 hour and 5 hours respectively. What will be the average speed of Neeraj for the whole journey?
A) 4 km/hr B) 7 km/hr C) 5 km/hr D) 6 km/hr
54. 40 mechanics can repair a bike in 56 days. In how many days 32 mechanics will do the same work?
A) 60 days B) 56 days C) 80 days D) 70 days
55. If $x : y = 5 : 4$, then what will be the ratio of $(\frac{x}{y}) : (\frac{y}{z})$?
A) 25 : 16 B) 16 : 25 C) 4 : 5 D) 5 : 4
56. Marked price of an article is 40% more than its cost price. If 50% discount is given on the article, then selling price is what percent of the cost price?
A) 78% B) 70% C) 93% D) 84%
57. If the length of a rectangle increases by 50% and the breadth decreases by 25%, then what will be the percent increase in its area?
A) 15% B) 17.5% C) 12.5% D) 25%
58. Four numbers are in the ratio of 2 : 5 : 3 : 8 respectively. If the sum of these four numbers is 432, then what is the sum of first and fourth number?
A) 192 B) 216 C) 240 D) 232
59. The bar chart given below shows the annual production (in 1000 tones) of coffee of a country for years 2009 to 2013.



- The production for the year 2011 is what percent of the production for the year 2009?
A) 157.5% B) 175.25% C) 187.5% D) 205.25%



60. The line chart given below shows the production (in 10000s) of cars in 7 different months.



Production of cars in month M_4 is what percent of the production of cars in month M_2 ?

- A) 125% B) 75% C) 66.66% D) 83.33%

SECTION – D (ENGLISH)

61. Select the option that means the same as the given idiom.

To miss the boat

- A) To miss an opportunity B) To miss the journey by boat
C) To fail to complete the work D) To decide to travel by air

62. Select the antonym of the given word

CONTRARY

- A) Predetermined B) Agreeable C) Balanced D) Neutral

63. Select the most appropriate word to fill in the blank.

India's Republic Day Parade had, among the main, an all-women's marching contingent.

- A) displays B) spectacle C) demonstrations D) attractions

64. From the given options, identify the segment in the sentence which contains the grammatical error. Having worked for the whole day, you shall have taken some rest and begun again.

- A) Having worked for B) some rest and begun again
C) the whole day D) you should have taken

65. Select the most appropriate option to substitute the underlined segment in the given sentence. If there is no need to substitute it, select No improvement.

In the interview held recently, I answer the questions as best as I could.

- A) I answer the question as best as I could.
B) I answered the questions as best as I could.
C) I answered the question as best as I can.
D) No improvement.



66. From the given options, identify the segment in the sentence which contains the grammatical error. The researchers have found that all species makes a constructive contribution to the ecology of the earth.
- A) a constructive contribution to
C) the ecology of the earth.
- B) that all species makes
D) The researchers have found
67. Select the word which means the same as the group of words given. The method and practice of teaching
- A) Psychology
B) Methodology
C) Pedagogy
D) Philosophy
68. Select the synonym of the given word.
MITIGATE
- A) Improve
B) Excuse
C) Lessen
D) Moderate
69. Select the most appropriate option to substitute the underlined segment in the given sentence. If there is no need to substitute it, select No improvement.
As you can see from my resume, I am working in Mumbai since 2016.
- A) No improvement.
B) I am work in Mumbai since 2016.
C) I am working in Mumbai from 2016.
D) I have been working in Mumbai since 2016.

Instructions:

In the following passage some words have been deleted. Fill in the blanks with the help of the alternatives given.

Passage:

Given that the availability of safe drinking water touches the lives of everyone, the(1) of Safe Drinking Water Mission can hardly be underestimated. Undoubtedly, this is one of the most(2) public goods problems to solve. The private solution of reaching out for bottled water due to risks posed by tap water is a(3) one. Even the poor are forced to choose between risking hospital expenses and buying bottled water. Taking into consideration the(4) scenario, it is the duty of every citizen to find out possible and inexpensive means to(5) that safe drinking water is available to all.

70. Select the most appropriate option that will fill in the blank number 1.
- A) significance
B) safety
C) progress
D) consequence
71. Select the most appropriate option that will fill in the blank number 2.
- A) difficult
B) complete
C) whole
D) ready
72. Select the most appropriate option that will fill in the blank number 3.
- A) simple
B) material
C) factual
D) costly



73. Select the most appropriate option that will fill in the blank number 4.

- A) public B) present C) general D) rural

74. Select the most appropriate option that will fill in the blank number 5.

- A) ensure B) endorse C) confirm D) assure

75. Select the correctly spelt word.

- A) Buraucracy B) Bureaucrasy C) Bureucracy D) Bureaucracy

76. Select the most appropriate option to substitute the underlined segment in the give sentence. If there is no need to substitute it, select No improvement.

The river is flooded and it has over flown its banks.

- A) it overflowing its banks B) it has overflow its banks
C) No improvement D) it overflow its banks

77. Select the antonym of the given word

SERENE

- A) Splendid B) Superb C) Showy D) Stressed

78. Select the most appropriate option to fill in the blank.

If an individual keeps his fingers crossed he for the best.

- A) Reacts B) suspects C) hopes D) responds

79. Select the correctly spelt word.

- A) Mathmetics B) Mathamatics C) Mathametics D) Mathematics

80. Select the option that means the same as the given idiom.

To set aside

- A) To move sideways B) To reject an offer
C) To stop temporarily D) To finish a work



SSC GD - 2023
FULL TEST – 01

ANSWER KEY:

1.	B	11.	D	21.	D	31.	D	41.	D	51.	B	61.	A	71.	A
2.	D	12.	B	22.	A	32.	D	42.	A	52.	B	62.	B	72.	D
3.	A	13.	B	23.	C	33.	A	43.	A	53.	C	63.	D	73.	B
4.	A	14.	D	24.	A	34.	A	44.	B	54.	D	64.	D	74.	A
5.	C	15.	D	25.	A	35.	B	45.	A	55.	A	65.	B	75.	D
6.	D	16.	C	26.	B	36.	D	46.	B	56.	B	66.	B	76.	C
7.	D	17.	C	27.	C	37.	C	47.	B	57.	C	67.	C	77.	D
8.	B	18.	C	28.	B	38.	A	48.	C	58.	C	68.	C	78.	C
9.	D	19.	B	29.	D	39.	D	49.	D	59.	C	69.	D	79.	D
10.	C	20.	C	30.	D	40.	D	50.	D	60.	B	70.	A	80.	C